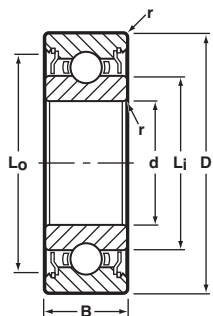




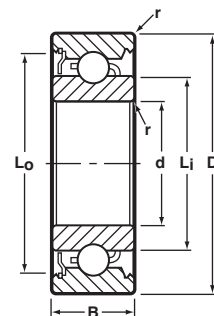
Radial, Shielded, Unflanged



Shielded
Ribbon Cage



Shielded
Crown Cage



BASIC P/N	CAGE TYPE *		BORE d		O.D. D		WIDTH B				LAND DIAMETER (REFERENCE)		FILLET RADIUS r	BALL COMPLEMENT		LOAD RATINGS** LB.		BRG. WT. GMS. ▼
	RIBBON	CROWN	INCH	(mm) ◊	INCH	(mm) ◊	1 SHIELD		2 SHIELDS		Li	Lo		NO. Z	SIZE Db	DYN. C	STATIC Co	
							INCH	(mm) ◊	INCH	(mm) ◊								
SSRI-2 1/2ZZ		H	.0469	1.191	.1562	3.967	.0937	2.380	.0937	2.380	.081	.134	.003	6	1/32	16	5	.15
SSRI-3ZZ		H	.0550	1.397	.1875	4.763	.0937	2.380	.1094	2.779	.093	.167	.003	5	3/64	28	10	.20
SSRI-4ZZ		H	.0781	1.984	.2500	6.350	.1094	2.779	.1406	3.571	.122	.205	.003	6	3/64	35	12	.50
SSRI-3332ZZ		H	.0937	2.380	.1875	4.763	.0937	2.380	.0937	2.380	.118	.167	.003	7	1/32	19	6	.10
SSRI-3332ZZ	R		.0937	2.380	.1875	4.763	.0937	2.380	.0937	2.380	.118	.167	.003	8	1/32	21	8	.10
SSRI-5ZZ	R	H	.0937	2.380	.3125	7.938	.1094	2.779	.1406	3.571	.173	.282	.003	6	1/16	60	22	.85
SSRI-418ZZ		H	.1250	3.175	.2500	6.350	.0937	2.380	.1094	2.779	.161	.228	.003	7	.0394	30	11	.35
SSRI-418ZZ	R		.1250	3.175	.2500	6.350	.0937	2.380	.1094	2.779	.161	.228	.003	8	.0394	33	12	.35
SSRI-518ZZ	R	H	.1250	3.175	.3125	7.938	.1094	2.779	.1406	3.571	.173	.282	.003	6	1/16	60	22	.70
SSRI-618ZZ	R	H	.1250	3.175	.3750	9.525	.1094	2.779	.1406	3.571	.173	.282	.005	6	1/16	60	22	1.30
SSR-2ZZ	R	H	.1250	3.175	.3750	9.525	.1562	3.967	.1562	3.967	.200	.321	.012	7	1/16	66	26	1.30
SSR-2ZZA	R	H	.1250	3.175	.5000	12.700	.1719	4.366	.1719	4.366	.200	.321	.012	7	1/16	66	26	3.10
SSRI-1218ZZ	R		.1250	3.175	.7500	19.050	.1250	3.175	.1250	3.175	.225	.341	.010	8	1/16	76	30	3.10
SSRI-5532ZZ		H	.1562	3.967	.3125	7.938	.1094	2.779	.1250	3.175	.221	.287	.003	7	3/64	41	15	.65
SSRI-5532ZZ	R		.1562	3.967	.3125	7.938	.1094	2.779	.1250	3.175	.221	.287	.003	8	3/64	45	17	.65
SSRI-5632ZZ		H	.1875	4.763	.3125	7.938	.1094	2.779	.1250	3.175	.221	.287	.003	7	3/64	41	15	.50
SSRI-5632ZZ	R		.1875	4.763	.3125	7.938	.1094	2.779	.1250	3.175	.221	.287	.003	8	3/64	45	17	.50
SSRI-6632ZZ	R	H	.1875	4.763	.3750	9.525	.1250	3.175	.1250	3.175	.235	.341	.003	8	1/16	76	31	.90
SSR-3ZZ	R	H	.1875	4.763	.5000	12.700	.1960	4.978	.1960	4.978	.276	.435	.012	7	3/32	140	59	2.60
SSRI-614ZZ		H	.2500	6.350	.3750	9.525	.1250	3.175	.1250	3.175	.285	.348	.003	13	.0394	43	21	.65
SSRI-814ZZ	R	H	.2500	6.350	.5000	12.700	.1250	3.175	.1875	4.763	.330	.455	.005	10	1/16	88	40	1.90
SSR-4ZZ	R	H	.2500	6.350	.6250	15.875	.1960	4.978	.1960	4.978	.364	.544	.012	8	3/32	159	70	4.40
SSRI-1214ZZ	R		.2500	6.350	.7500	19.050	.2812	7.142	.2812	7.142	.341	.639	.016	6	9/64	412	192	8.70
SSRI-8516ZZ	R		.3125	7.938	.5000	12.700	.1562	3.967	.1562	3.967	.362	.460	.005	11	1/16	93	43	1.60
SSRI-1038ZZ	R		.3750	9.525	.6250	15.875	.1562	3.967	.1562	3.967	.458	.557	.010	12	1/16	96	53	2.60
SSRI-1438ZZ	R		.3750	9.525	.8750	22.225	.2812	7.142	.2812	7.142	.474	.783	.016	7	5/32	569	273	8.80
SSRI-1412ZZ	R		.5000	12.700	.8750	22.225	.2812	7.142	.2812	7.142	.622	.783	.016	12	3/32	198	110	9.78
SSRI-1812ZZ	R		.5000	12.700	1.1250	28.575	.3125	7.938	.3125	7.938	.628	.965	.016	9	5/32	684	344	22.00
SSRI-2258ZZ	R		.6250	15.875	1.3750	34.925	.3438	8.732	.3438	8.732	.852	1.235	.031	8	7/32	1500	740	34.00
SSRI-2634ZZ ♦			.7500	19.050	1.6250	41.275	.4375	11.112	.4375	11.112	1.019	1.345	.031	8	1/4	1900	980	46.00
SSRI-3078ZZ ♦			.8750	22.225	1.8750	47.625	.5000	12.700	.5000	12.700	1.266	1.567	.031	10	1/4	2200	1300	99.00

Notes:

1. Inch to metric conversion—see page 68.
2. Basic part numbers shown above include code "SS" for AISI 440C stainless steel. If SAE 52100 chrome alloy steel is desired, delete "SS."
3. See page 63 for ABEC tolerances.
4. r=Maximum shaft or housing fillet radius that bearing corners will clear.
5. For single shield eliminate one "Z" from the basic part number.

- * "R" Ribbon or "H" Crown cages are available as indicated. Please consult with factory for machined cage availability.
- ◊ Metric dimensions are for reference only.
- ** Load ratings are based on ABMA Standard #12.
- ♦ Limited retainer options available. Please consult with factory.
- ▼ Bearing weights are for reference only.