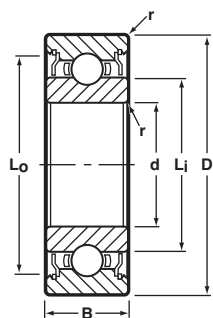




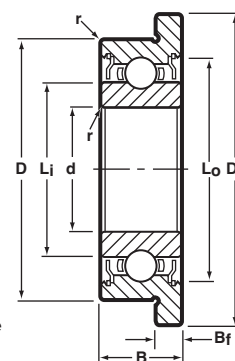
Radial, Shielded, Unflanged and Flanged



Unflanged
Shielded
Ribbon Cage



Flanged
Shielded
Ribbon Cage



BASIC P/N †	CAGE TYPE *	BORE d		O.D. D		WIDTH B		FLANGE DIA. Df	FLANGE WIDTH Bf	LAND DIAMETER (REFERENCE)		FILLET RADIUS r		BALL COMPLEMENT		LOAD RATINGS** LB.		
		mm	(INCH) ◇	mm	(INCH) ◇	mm	(INCH) ◇			Li mm	Lo mm	mm	(INCH) ◇	NO. Z	SIZE Db	Dyn. C	STATIC Co	
SSR-515	H	1.5	.0591	5.0	.1969	2.6	.1024	6.5	0.8	2.60	4.00	.15	.0060	7	0.8mm	20	7	
SSR-615		1.5	.0591	6.0	.2362	3.0	.1181	7.5	0.8	2.90	5.00	.15	.0060	6	3/64	35	11	
SSR-620		2.0	.0787	6.0	.2362	3.0	.1181	7.5	0.8	3.10	5.20	.15	.0060	6	3/64	35	13	
☆ SSR-620Y32		2.0	.0787	6.0	.2362	2.3	.0906	—	—	3.16	5.23	.15	.0060	7	1.0mm	29	11	
SSR-720		2.0	.0787	7.0	.2756	3.5	.1378	8.5	0.9	3.80	5.90	.15	.0060	7	3/64	40	15	
SSR-725	H/M5	2.5	.0984	7.0	.2756	3.5	.1378	8.5	0.9	3.80	5.90	.15	.0060	7	3/64	40	15	
SSR-825		2.5	.0984	8.0	.3150	4.0	.1575	9.5	0.9	4.10	7.16	.15	.0060	6	1/16	60	22	
☆ SSR-830X		3.0	.1181	8.0	.3150	4.0	.1575	9.5	0.9	4.39	7.21	.15	.0060	6	1/16	60	22	
SSR-930Y04		3.0	.1181	9.0	.3543	4.0	.1575	10.6	0.8	4.80	7.60	.15	.0060	7	1/16	66	26	
SSR-930		3.0	.1181	9.0	.3543	5.0	.1969	10.5	1.0	4.80	7.60	.15	.0060	7	1/16	66	26	
☆ SSR-1030	KC/M5/R	3.0	.1181	10.0	.3937	4.0	.1575	11.5	1.0	5.08	8.20	.15	.0060	7	1/16	66	26	
SSR-1140	R	4.0	.1575	11.0	.4331	4.0	.1575	12.5	1.0	6.40	8.75	.20	.0080	8	1/16	75	31	
☆ SSR-1140X		4.0	.1575	11.0	.4331	4.0	.1575	—	—	5.97	8.75	.30	.0120	8	1/16	75	31	
SSR-1240		4.0	.1575	12.0	.4724	4.0	.1575	13.5	1.0	6.50	9.95	.20	.0080	7	2.0mm	104	42	
SSR-1340		4.0	.1575	13.0	.5118	5.0	.1969	15.0	1.0	7.00	11.00	.20	.0080	7	3/32	139	60	
☆ SSR-1640X		R	4.0	.1575	16.0	.6299	5.0	.1969	18.0	1.0	8.03	13.24	.30	.0120	8	3/32	157	68
☆ SSR-1350	R	5.0	.1969	13.0	.5118	4.0	.1575	15.0	1.0	7.50	11.17	.20	.0080	8	2.0mm	112	49	
SSR-1450	R	5.0	.1969	14.0	.5512	5.0	.1969	16.0	1.0	6.95	12.10	.20	.0080	7	3/32	139	60	
☆ SSR-1650X		5.0	.1969	16.0	.6299	5.0	.1969	18.0	1.0	8.03	13.24	.30	.0120	8	3/32	157	68	
☆ SSR-1950		5.0	.1969	19.0	.7480	6.0	.2362	22.0	1.5	8.66	16.25	.30	.0120	6	5/32	481	240	
SSR-1560		KC/M5/R	6.0	.2362	15.0	.5906	5.0	.1969	17.0	1.2	7.76	13.20	.15	.0060	7	7/64	212	101
SSR-1760			6.0	.2362	17.0	.6693	6.0	.2362	19.0	1.2	8.22	14.77	.20	.0080	6	3.5mm	384	187
☆ SSR-1960	6.0		.2362	19.0	.7480	6.0	.2362	22.0	1.5	8.66	16.25	.30	.0120	6	5/32	481	226	
☆ SSR-1970	R		7.0	.2756	19.0	.7480	6.0	.2362	22.0	1.5	10.60	15.93	.30	.0120	7	1/8	379	174
☆ SSR-2270	KC/R		7.0	.2756	22.0	.8661	7.0	.2756	25.0	1.5	10.76	18.90	.30	.0120	7	5/32	569	273
☆ SSR-1980X	R	8.0	.3150	19.0	.7480	6.0	.2362	22.0	1.5	10.60	15.93	.30	.0120	7	1/8	379	174	
☆ SSR-2280	KC/M5/R	8.0	.3150	22.0	.8661	7.0	.2756	25.0	1.5	10.76	18.88	.30	.0120	7	5/32	569	273	
☆ SSR-2690	R	9.0	.3543	26.0	1.0236	8.0	.3150	—	—	14.80	22.64	.30	.0120	7	3/16	703	399	

☆ Production standard.

Notes:

- Metric to inch conversion—see page 68.
- Basic part numbers shown above include code "SS" for AISI 440C stainless steel. If SAE 52100 chrome alloy steel is desired, delete "SS."
- See page 63 for ABEC tolerances.
- r=Maximum shaft or housing fillet radius that bearing corners will clear.

- While we have the capability to produce the sizes listed, they are not all currently in production. Please consult with factory for minimum order quantity and quote.
- Add "Z" for single shield, "ZZ" for two shields, as a suffix to basic part number before "Y" or "W" width variations.

† For flanged bearing substitute prefix "SSRF-" when applicable.

* Please consult with factory for cage availability.

◇ Inch conversions are given for reference only.

** Load ratings are based on ABMA Standard #12.